

Microscopy Report

Project #	147,901	Date Completed:	January 16, 2013
Customer:	Shurpac	Date Received:	January 14, 2013
Location:	Racine, WI	TSS/TSM:	G. Groubert
Customer ID:	80065	RSM:	G. Schnabel

Part Source & Description:

Two steel panels processed using Gardobond 24T with Gardolene V6513 Activator and Gardolene D6800/6 Seal dated 1/4/13 were received.

Objectives:

Coating Weight
Crystal Morphology

Method of Preparation:

Coating weight was tested using LTM 76.
Crystal morphology was done using SEM.

Scanning Electron Microscope (SEM) allows you to observe the crystal morphology of coatings on metal substrate at the range of 35x – 300,000x magnification as well as surface morphology in general.

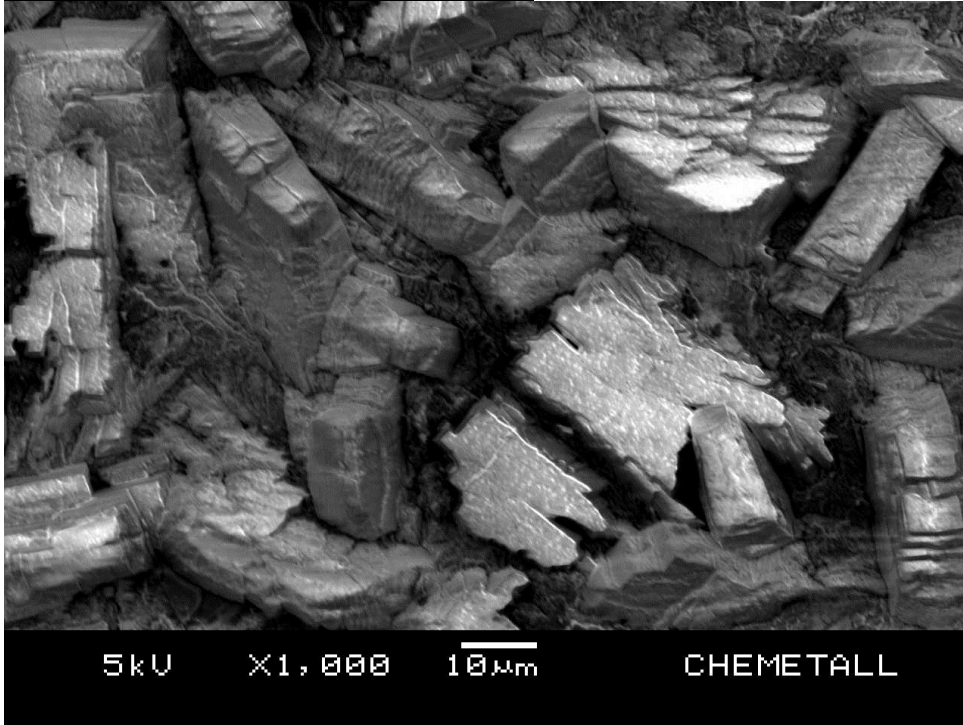
Results:**Coating Weight:**

Panels identified as	Coating Weight (mg/ft²)
Steel Panel # 1 – 1/4/13	516
Steel Panel # 2 – 1/4/13	578

Microscopy Report

Crystal Morphology using SEM:

Gardobond 24T Steel Panel 1 – 1/4/13:



Gardobond 24T Steel Panel 2 – 1/4/13:

